

GIRLS

K through 5th Grade

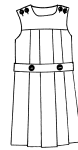


Red & Navy Plaid Jumper			
1123	Girls	02-16	\$39.75
1189	Half Sz	4-/18-	\$41.75

White SS or LS Tulane Blouse			
942	SS-girl	04-16	\$15.75
957	LS-girl	04-16	\$18.75
943	SS-misses	32-46	\$17.75



Navy Jumper			
638	Girl	02-16	\$39.75
664	Girl	01-16	\$46.75
1170	Half Sz	04-18-	\$41.75
3077	Half Sz	06-18-	\$48.75



Navy & Khaki Jumper			
3030	Navy	02-16	\$49.75
3152	Khaki	02-16	\$49.75
3031	Navy Half Sz	4-/18-	\$51.75

Red/Navy, Navy, or Khaki Skort			
5082	Red/Navy-girl	02-16	\$41.75
5212	Red/Navy-	2-/18-	\$44.75
5202	Navy Half Sz	2-/18-	\$39.75
5201	Khaki Half Sz	2-/18-	\$39.75
5108	Navy-girl	02-20	\$36.75
5096	Khaki-girl	02-20	\$36.75



Red/Navy, Navy, or Khaki Culotte			
530	Red/Navy-girl	00-16	\$37.75
5305	Red/Nvy Half sz	2-/16-	\$29.00
320	Navy-girl	00-16	\$36.75
5128	Navy-Half Sz	6-/16-	\$39.75
325	Khaki-girl	02-16	\$36.75
5220	Khaki Half Sz	6-/16-	\$38.75



GIRLS

K through 5th Grade



Monogrammed Field Trip Shirt			
<i>Required for Field Trips and Chapel</i>			
3400	Lt. Blue Pique	XXS-XL	\$22.00
3401	Lt. Blue Jersey	XXS-XL	\$23.00

Pique Knit Shirts			
312	Red SS-Y	XXS-XL	\$18.75
348	Red SS-A	S-3XL	\$21.75
387	Red LS-Y	XXS-XL	\$21.75
987	Red LS-A	S-3XL	\$24.25
818	White SS-Y	XXS-XL	\$18.75
820	White SS-A	S-3XL	\$21.75
863	White LS-Y	XXS-XL	\$21.25
866	White LS-A	S-3XL	\$24.25
313	Navy SS-Y	XXS-XL	\$18.75
311	Navy SS-A	S-3XL	\$21.75
308	Navy LS-Y	XXS-XL	\$21.75
309	Navy LS-A	S-3XL	\$24.25
378	Lt.Blue SS-Y	XXS-XL	\$18.75
379	Lt.Blue SS-A	S-3XL	\$21.75

Jersey Knit Shirts			
834	Red SS-Y	XXS-XL	\$19.75
835	Red SS-A	S-XXL	\$22.75
628	White SS-Y	XXS-XL	\$19.75
629	White SS-A	S-XXL	\$22.75
909	Navy SS-Y	XXS-XL	\$19.75
910	Navy SS-A	S-XXL	\$22.75
1783	Lt. Blue SS-Y	XXS-XL	\$19.75
1784	Lt. Blue SS-A	S-XXL	\$22.75



Turtleneck Shirts			
319	White-Youth	XXS-XL	\$21.75
315	White-Adult	S-XXL	\$24.75
6570	Navy-Youth	XXS-XL	\$21.75
6508	Navy-Adult	S-XL	\$24.75
310	Red-Youth	XXS-XL	\$21.75
377	Red-Adult	S-XXL	\$24.75



Navy Pullover Sweater and Vest			
235	Cardigan-Y	XXS-XL	\$35.75
237	Cardigan-A	S-3XL	\$41.75
270	Pullover-Y	XXS-XL	\$29.75
272	Pullover-A	S-3XL	\$35.75
257	Vest-Y	XXS-XL	\$26.75
259	Vest-A	S-3XL	\$32.75



Chapel Dress- Lt. Blue monogrammed polo with any bottoms.

GIRLS

K through 5th Grade



Red/Navy, Navy, or Khaki Slacks			
5183	Red/Navy-girl	04-18	\$45.75
5179	Navy-girl	04-16	\$40.75
5101	Navy-Jr	03-27	\$38.00
1750	Khaki-Jr	03-27	\$31.75
1828	Khaki w/elastic	03-6X	\$25.75
1801	Khaki-girl	07-16	\$28.75
1802	Khaki-slim	07-16	\$28.75
1803	Khaki-Half Sz	6-/18-	\$32.75

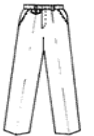
Red/Navy, Navy, or Khaki Shorts			
5430	Pull-on	2T-6X	\$24.00
5052	Red/Navy Half Sz	2-/18-	\$42.75
5015	Red/Navy-girl	2-/18-	\$36.75
204	Red/Navy-girl	00-16	\$40.75
161	Navy-girl	00-16	\$34.75
544	Khaki Reg-girl	04-07	\$19.75
504	Khaki Reg-girl	08-16	\$22.75
505	Khaki-Jr	03-25	\$25.75



Navy & Khaki Skirts			
4063	Khaki skirt	04-20	\$39.75
4064	Navy skirt	04-20	\$39.75



Navy & Khaki Flat front Pants			
583	Navy -Jr.	01-27	\$32.75
584	Khaki -Jr	01-27	\$32.75



Khaki Flat front Pants			
7124	Girl	08-16	\$29.75
7125	Slim	08-16	\$29.75

Navy Polar fleece Jacket			
8830	Youth	S-XL	\$39.75
8831	Adult	XS-XL	\$44.75



Crew neck Sweatshirt			
1317	Navy-Y	XS-L	\$15.75
1318	Navy-A	S-3XL	\$17.75
1320	Grey-Y	XS-L	\$15.75
1321	Grey-A	S-3XL	\$17.75



Shop On-Line!

www.parkersu.com

Web ID Code: HO2Ø1127

Free Shipping on all Web Orders over \$100.00

Early Summer Sale!

Check in store and on-line for
dates and discounts!

Cypress Christian School Sale!

July 27th at the school from
10am-5pm

Additional Uniform Information

- This list outlines the only approved garments for Girls Grades K-5 for the 2011-2012 school year.
- Refer to CCS dress code guidelines before purchasing uniforms.
- Alterations and custom fit garments available. (Custom fit garments may take several weeks to order)
- Most half-size garments available through mail order only.
- Logos are restricted to CCS approved monogram.
- Any color polo with a monogram may be worn on Friday. (These are mail order only, please allow approximately 2 weeks for delivery.)

**Cypress Christian School
Parker School Uniforms
Approved Garments
Elementary Girls
(Grades K-5)
For 2011-2012**



Memorial Store
12524 Memorial Dr.
Houston, TX 77024
713-465-1635

Regular Hours
Tues/W/F 10-5
Thursday 10-7
Saturday 10-2

Post Oak Store
1110 N. Post Oak #140
Houston, TX 77055
713-681-4045

Summer Hours
July 18-August 15
M,Tu,W,Th 10-6
Thursday 10-7
Saturday 10-3

Closed for these 2011-12 Holidays
Memorial Day 2011 May 28-30
Independence Day July 5
Labor Day Sep.5
Thanksgiving Nov. 24-27
Christmas Dec. 23-26
New Years Dec. 31, 2011

Parker

SUMMIT LOOKS

